

PARTS LIST		
ITEM NO.	PART NO.	DESCRIPTION
1	99888450	Bubbler Assy
2	99721357	Back Panel Assy RH ADA
	-----	Back Panel Assy LH ADA
3	99220293	Strainer
4	99042060	Ftting - Elbow 1/4 x 1/4
5	99346064	Setscrew - #10-32 x .31
6	99721009	Screw - 5/16-18 x 1.00 HHMS
7	99270736	Screw - #8-18 x .37 HHSM
8	99047028	Bubbler Assembly VR
9	99721008	Screw - #8-32 x .38 THSM
10	99123846	Screw - #10-24 x .62 HHMS
11	99124594	Basin - Swirlflow
12	99721005	Lower Shell
13	99721006	Fountain Body
14	99650007	Cover Plate
15	99346061	Sleeve
16	9980085	Kit - Pushbutton/Spring/
17	99460175	AP-99 Panel (Optional)
18	99492346	Kit - Regular/Holder/Nut
19	99721357	Back Panel Assy RH ADA
	-----	Back Panel Assy LH ADA
20	99013186	Poly Tubing (Cut To Length)
21	99441466	Gasket - Drain
22	99441468	Assy - Drain/Tailpipe
23	99441467	Drain - Plug 1-1/2"
NS	99790116	Hanger Bracket

NS = NOT SHOWN

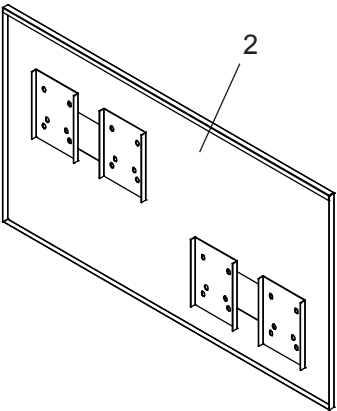


Figure 16 – Back Panel Assembly

Installing Back Panel: When installing back panel assy. (Item 2) with MPW (Mounting Plate), attach channel braces as shown above. Remove the protective backing from the tape installed on the braces. Line up the corresponding holes in the braces and back panel and press firmly in place.

TROUBLESHOOTING & MAINTENANCE

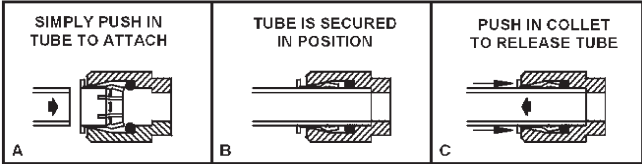
Orifice Assembly: Mineral deposits on orifice can cause water flow to spurt or not regulate. Mineral deposits may be removed from the orifice by poking with a small round file not over 1/8" diameter, or using a small diameter wire.

CAUTION: DO NOT file or cut orifice material.

Stream Regulator: If orifice is clean, regulate flow as in Step 8 of the installation instructions. If replacement is necessary, see parts list for correct regulator part number.

Actuation of Quick Connect Water Fittings: Cooler is provided with lead-free connectors which utilize an o-ring water seal. To remove tubing from the fitting, relieve water pressure, push in on the gray collar while pulling on the tubing. (See Figure 15) To insert tubing, push tube straight into fitting until it reaches a positive stop (approximately 3/4").

OPERATION OF QUICK CONNECT FITTINGS



PUSHING TUBE IN BEFORE PULLING IT OUT HELPS TO RELEASE TUBE

Figure 15 – Quick Connect Fittings

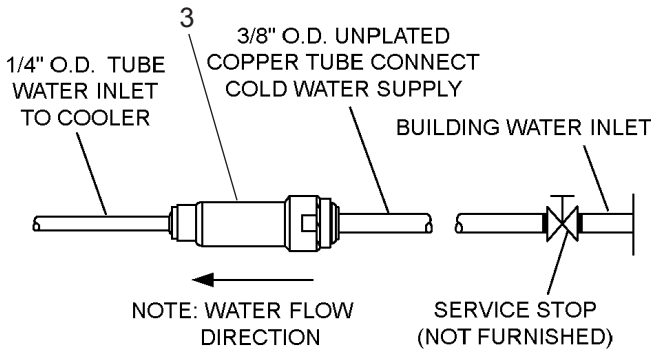
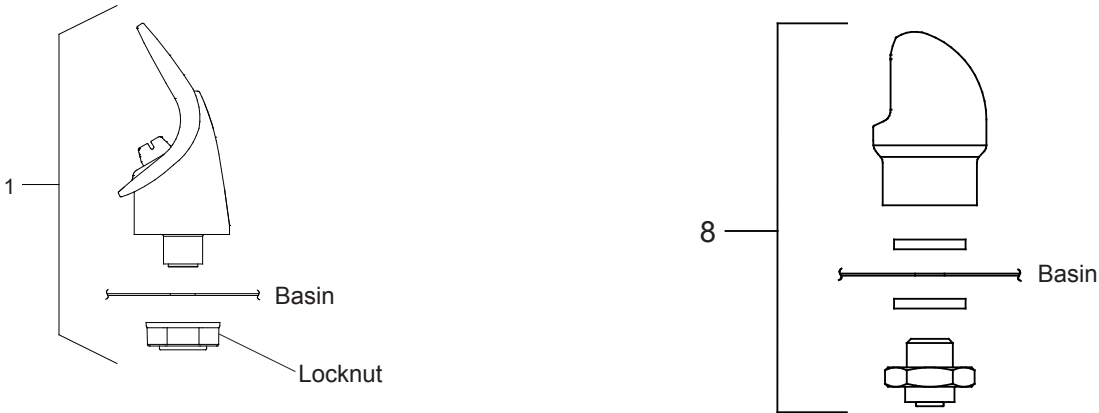


Figure 17 – Water Supply Connections



NOTE: When installing replacement bubbler and pedestal, tighten locknut only to hold parts snug in position. Do Not overtighten.

Figure 12 - Bubbler Details

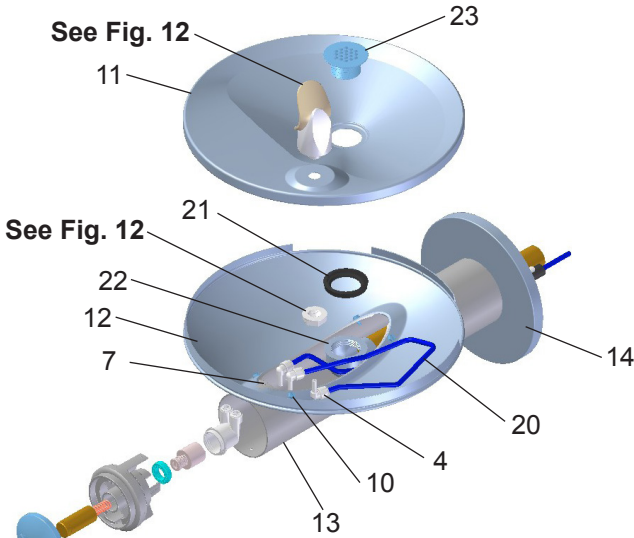


Figure 13 - Fountain Body

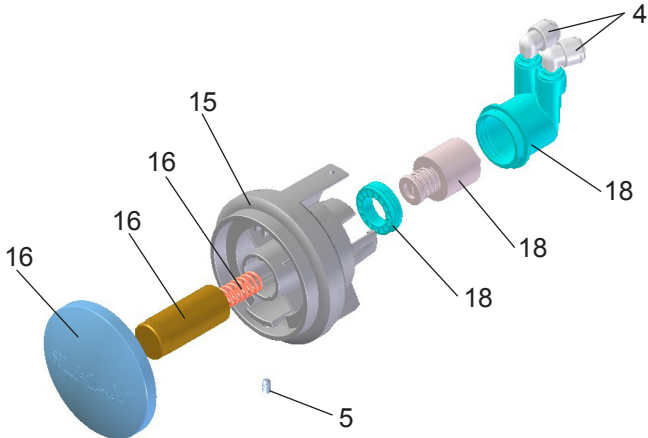


Figure 14 - Push Button

